

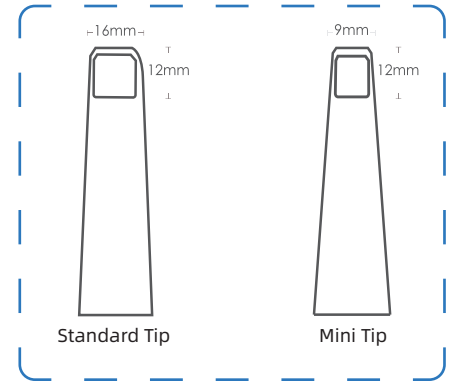
# Aoralscan L

Intraoral Scanner

Link, Leverage, Lead



# Aoralscan L



Automatic anti-fogging

Autoclavable 100 times

One-button control

Ergonomic design  
for optimal handheld  
operation

Light weight: 250g

Dynamic LED indicator



# Excellent Scanning Performance

Aoralscan L optimizes hardware structure and software algorithms to ensure high accuracy and quality, providing realistic and reliable digital impressions for denture applications.



## Faster Scan

AI-powered scanning capabilities ensure a fast and smooth scanning experience, saving chairside time and providing more comfort to patients.



## More Accurate Scans

Thanks to optimized algorithms and imaging mechanism, Aoralscan L carries out more accurate and precise results by 30%, meeting the clinical needs of different applications.



## Greater Scan Depth

Aoralscan L is suitable for various clinical scenarios including acquiring scan bodies and periodontal scans.



# User-Friendly

## Smart and Intuitive - Smooth Scanning Experience for Dentists

With powerful and intelligent data processing capabilities, Aorlascan L requires minimal effort. Even beginners can acquire ideal scan results in minutes.



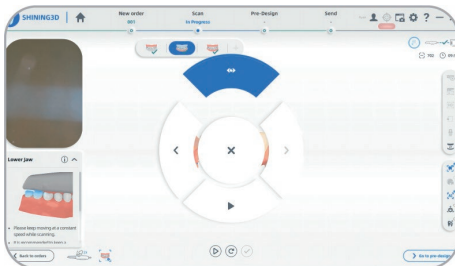
### Intuitive UI

Neater and more user-friendly interface.  
More flexible workflow.



### AI Scan

Automatically identifies and filters out any unnecessary soft tissue data during scanning, resulting in a quicker and cleaner scan process.

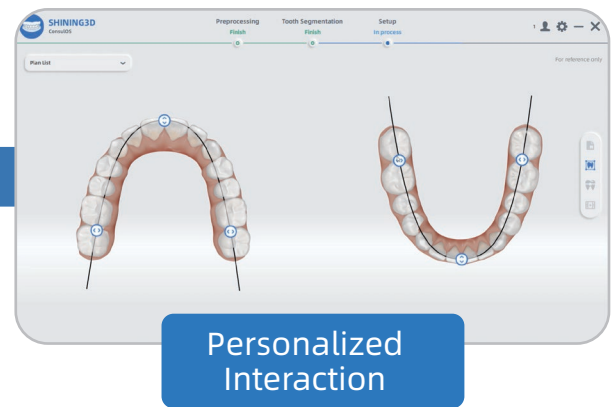
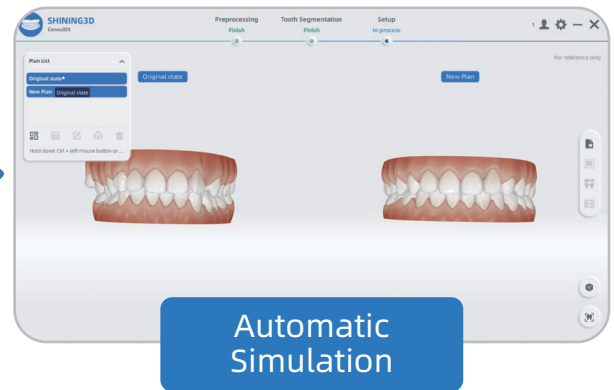
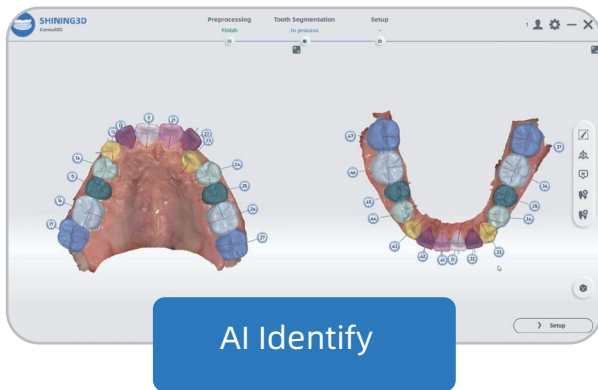


### Motion Sensing

Dentists can scan with minimal contact with the computer, ensuring a safe and efficient scan experience.

# Ortho Simulation

Patients can preview images of their new smile results in real time.

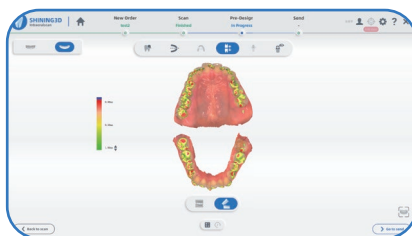


# Clinical Toolkit

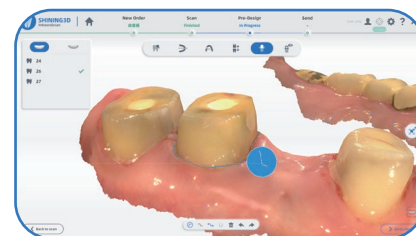
The clinical toolkit assists dentists to evaluate and pre-design the scanned data in their own clinic. It facilitates effective communication with dental labs to deliver quality dental work with high efficiency.



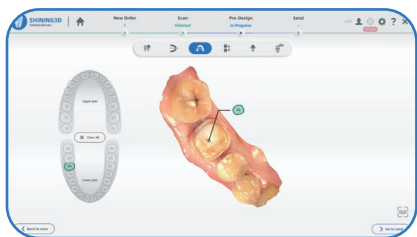
Undercut Check



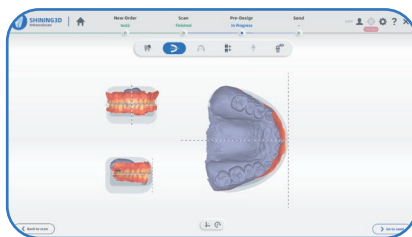
Bite Check



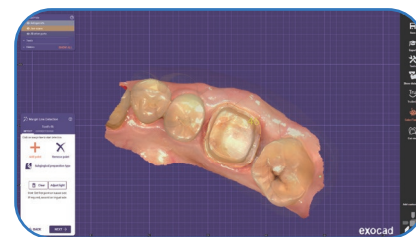
Margin Line Auto Extraction



Tooth Marking



Coordinate Adjustment



Direct Export into exocad

# Efficient Dentist - Technician Collaboration

## Standard and Unlimited - Seamless Collaboration for Dentists and Technicians

Aoralscan L helps streamline collaboration between clinics and labs to achieve efficient and effective restorative works.

### Cloud Data Platform

SHINING 3D's cloud data platform enables secure data transmission, making it convenient for communication between clinics and dental labs.

## SHINING3D DENTAL CLOUD

Connecting **clinics** and **dental labs**,

Jointly build a **healthy ecosystem** of dental digital platform.



Data Transmission



Cloud Storage



Order Track



Communication



# Technical Specifications

## Aoralscan L

Scan field	Standard tip: 16 × 12 × 22 mm Small tip: 12 × 9 × 22 mm
Scan principle	Non-contact scanner with structured light
Dimension (L × W × H)	290 × 33 × 47 mm
Weight	239 ± 20 g (without cables)
Output	STL, OBJ, PLY
Connector	USB 3.0
Power Input	12V DC/3 A

## Recommended PC Configuration

CPU	Intel Core i7-8700 or higher
RAM	16 GB or higher
Hard Drive	256 GB SSD or above
Graphic Card (GPU)	NVIDIA RTX 2060 6GB or higher
Operating System	Windows 10 Professional (64-bit) or later versions of Windows operating system
Screen Resolution	1920 × 1080, 60Hz or higher
I/O Ports	More than 2 type-A USB 3.0 (or higher) ports

## GO DIGITAL WITH SHINING 3D

SHINING 3D provides fully integrated 3D digital dental solutions through acquiring 3D data with desktop and intraoral 3D scanners, designing with professional dental CAD software and manufacturing dental products with 3D resin printers to create working models, orthodontics models, implant models, surgical guides, wax-ups, and partial frameworks.

SHINING 3D is committed to the in-depth development of 3D digital dental solutions and the popularization of these solutions around the globe helping dental labs, clinics, hospitals and other organizations to effectively and efficiently achieve digital transformation.